



Specification

Clone: L7C6

Lot #: 20231013

Clonality: Monoclonal Antibody

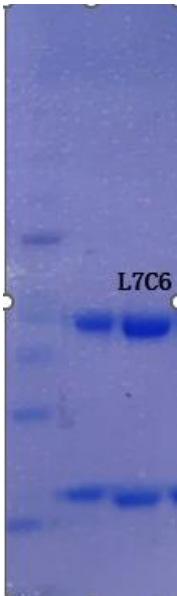
Storage Buffer :In 1×PBS, pH 7.2

Applications: ELISA, others unspecified

Source/Isotype: Mouse IgG1 Kappa

Concentration: 3.7mg/mL (BCA)

Purity: > 90% pure (SDS-PAGE)



Data Background

Inflammation is a kind of defense reaction of the body to various pathogens and tissue damage, and it is a protective factor of the body. However, excessive inflammatory response will aggravate tissue damage and cause a series of clinical complications and adverse consequences. C-reactive protein (CRP) is synthesized by liver cells, produced during fetal life and not transmitted by the maternal placenta. The mechanism of its production is that when the body is infected or the tissue is damaged, macrophages and other white blood cells are activated to produce cytokines such as interleukin-6 (IL-6), interleukin-1 (IL-1), tumor necrosis factor TNF- α and other mediators, which reach the liver and stimulate the synthesis of CRP by liver cells and epithelial cells. Structurally, CRP contains 5 polypeptide chain subunits, non-covalently bound to a disk polymer with a molecular weight of 115,000-140,000, CRP is a typical acute phase protein.



Gene Information

UniProt ID: P02741

Entrez-Gene Id: 1401

Protein Name: C-reactive protein

VOTE

Storage: The product is shipped at 4°C. Upon delivery, please aliquot and store at -20°C -80°C for long term preservation. Avoid freeze/thaw cycles.